



Introduction

The modern philosophy of art encourages artists to be creative. Contemporary Japanese artists who drew flowers were creative in several ways. Some intentionally distorted flower shape or the shape of objects in the background. Others used false colors when coloring the flower or its background. This virtual exhibition presents five examples of each of the following methods used by modern Japanese printmakers to be creative:

Flower

- **Distorted**
- **False colored**
- **Black-and-white**

Picture Background

- **Distorted**
- **False colored**
- **Black**

For each of the thirty prints (i.e., 6 methods x 5 examples) the following information is provided: names of the flower(s) depicted and the artist, printing method used and print size. These prints are part of the Reader Collection of Japanese Flower-and-Bird Art.

1 **Distorted flower** - corn poppy (*Papaver rhoeas*), dandelion (*Taraxacum* sp.) and pansy (*Viola tricolor*) by Eiichi Kotozuka, woodblock, 360 x 275 mm



2 **Distorted flower** - florist's cyclamen (*Cyclamen persicum*) by Yōichi Watanabe, woodblock, 145 x 125 mm



3 **Distorted flower** - Asian skunk-cabbage (*Lysichiton camtschatcensis*) by Saburō Miyata , woodblock, 250 x 210 mm

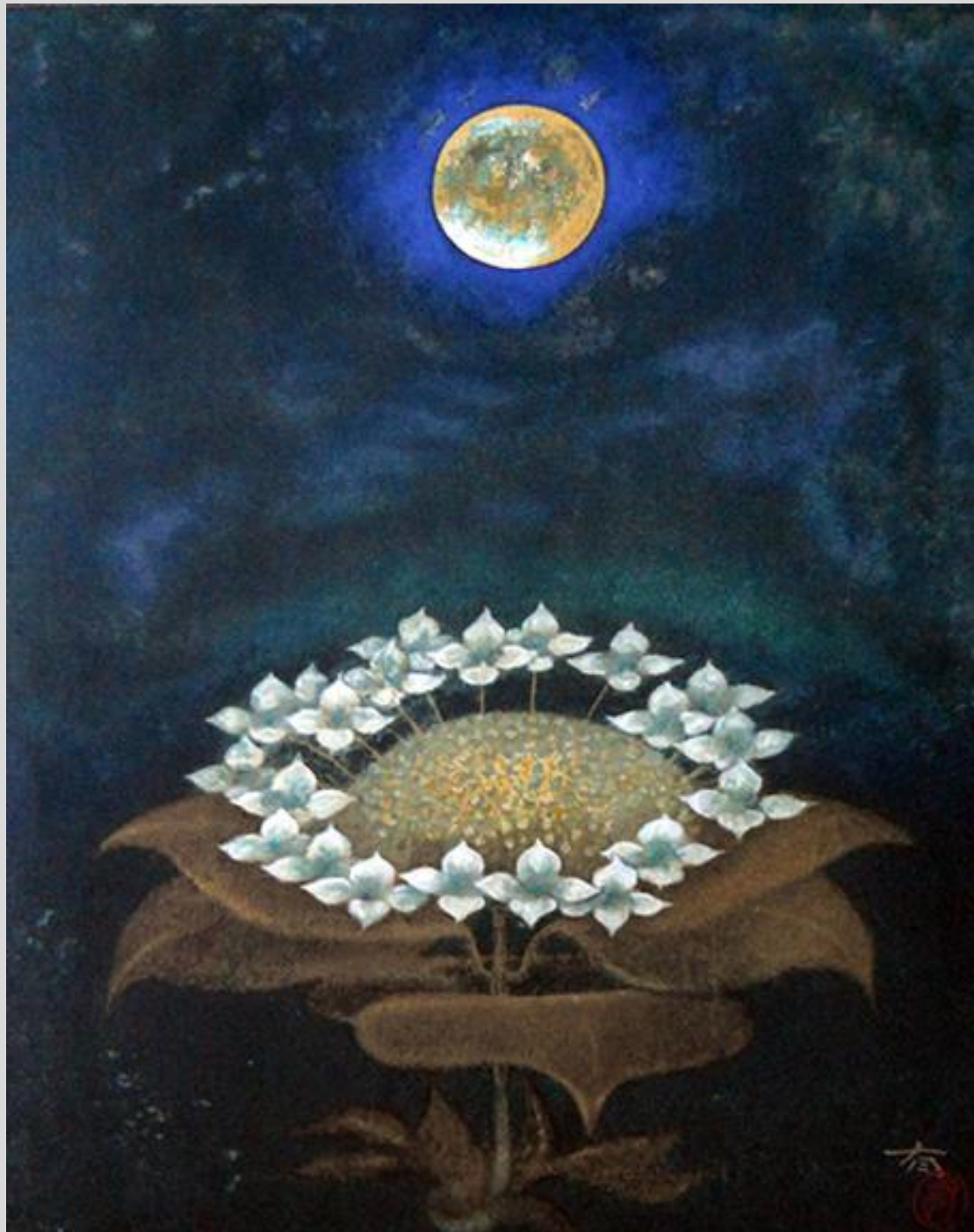


109/1000 ミズバショウ

4 **Distorted flower** - trumpet
honeysuckle (*Lonicera sempervirens*) by
Kiyoharu Yamada, woodblock, 165 x 225
mm



5 **Distorted flower** - hydrangea
(*Hydrangea* sp.) by Yū Sugiyama ,
lithograph, 330 x 410 mm



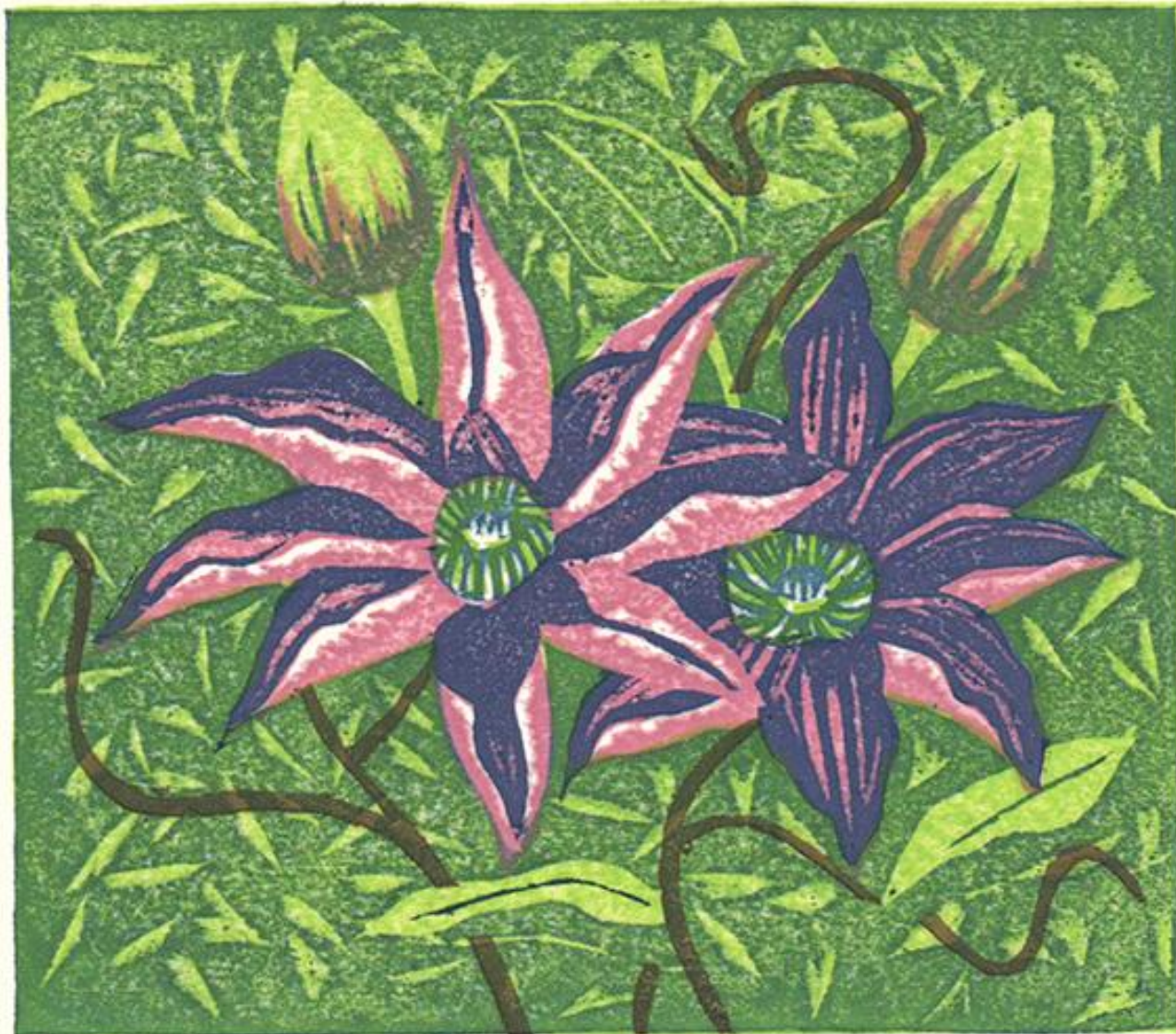
6 **Distorted background** - red spider-lily (*Lycoris radiata*) by Yōko Watanabe , lithograph, 485 x 350 mm



45/100

yoko w.

7 **Distorted background** - clematis (*Clematis patens*) by Kōzō Onishi, woodblock, 145 x 125 mm



8 **Distorted background** - Japanese iris (*Iris ensata*) by Kazutoshi Sugiura, screenprint, 480 x 730 mm



11/30 花恋藤 40 119

K. Sugiura '95 24

9 Distorted background - lily (*Lilium* sp.) by Munenori Makino, woodblock, 285 x 230 mm



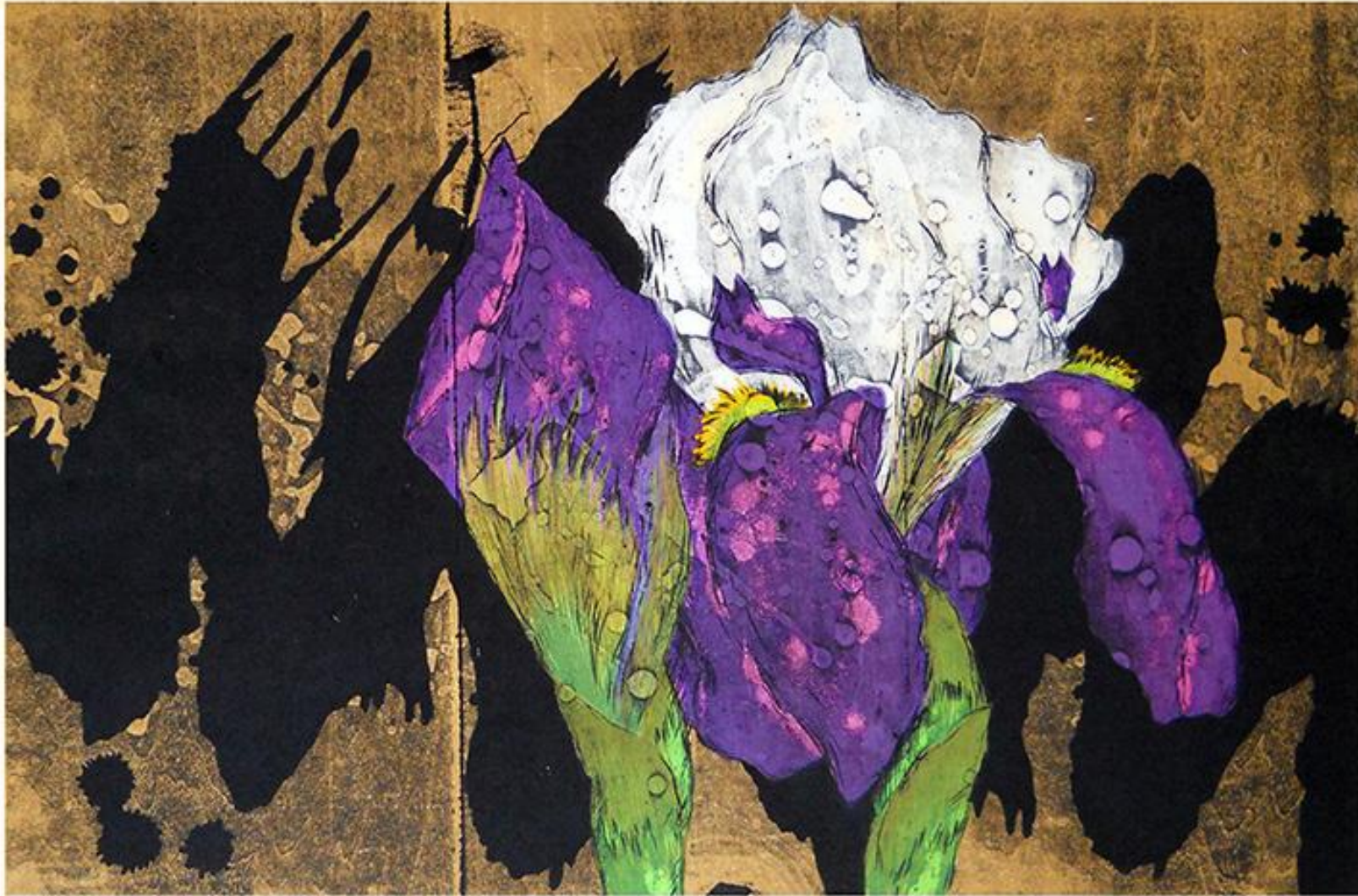
34/800

1989

百合

宗則

10 **Distorted background** – German iris (*Iris germanica*) by Taika Kinoshita, woodblock, 610 x 440 mm



1970 "Distorted background" (purple iris)

Taika Kinoshita

11 False colored flower - shallow-flower (*Iris laevigata*) by Makoto Kobayashi, woodblock, 195 x 175 mm



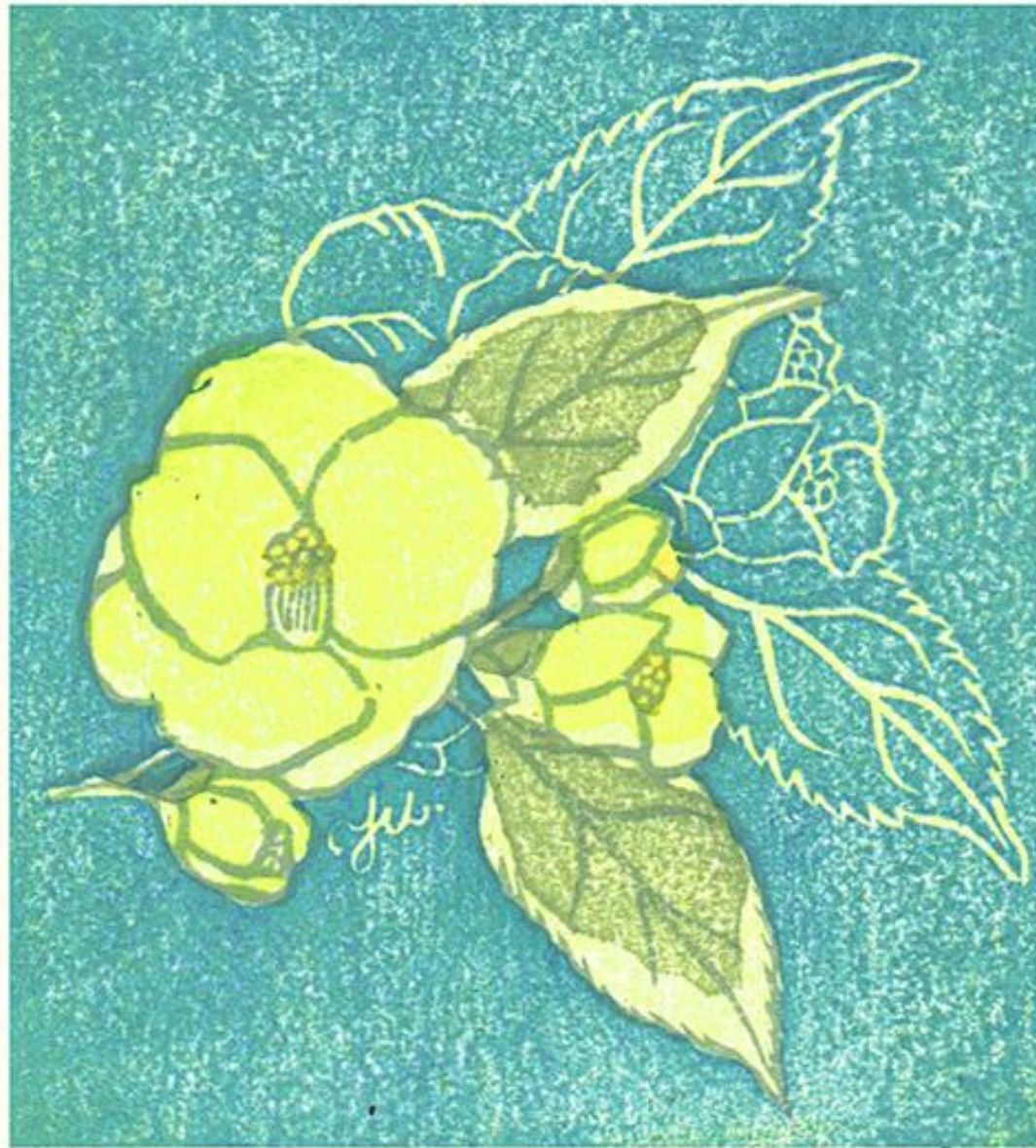
12 False colored flower - Japanese bindweed (*Calystegia japonica*) by Kieko Tsurusawa, woodblock, 150 x 125 mm



13 **False colored flower** - florist's cyclamen (*Cyclamen persicum*) by Kyōko Hirota , screenprint, 265 x 275 mm



14 False colored flower - camellia (*Camellia japonica*) by Yūko Kaneko, 125 x 140 mm



yuko. kaneko.

15 False colored flower - lilytree magnolia (*Magnolia denudata*) by Tatsuo Ohishi, woodblock, 290 x 225 mm



106/300

香白

Ohishi [Red Seal]

16 **False colored background** - egret orchid (*Habenaria radiata*) by Tadashi Ikai, intaglio, 300 x 360 mm



11/11

— — — — —

17 False colored background -
balloon flower (*Platycodon
grandiflorus*) and painter's palette
(*Persicaria filiformis*) by Sawako
Sawa, woodblock, 370 x 480 mm



3 3 7

90

Sawako Sawa

AP

18 False colored background - cosmos (*Cosmos bipinnatus*) by Kōtarō Yoshioka, screenprint, 285 x 220 mm



226 / 100

野辺の花

Y. Kōtarō

19 **False colored background** -
scabrous gentian (*Gentiana scabra*)
by Saburō Miyata, woodblock, 255 x
300 mm



20 False colored background - iris (*Iris* sp.) by Genshichi Tsukagoshi, lithograph, 190 x 135 mm



2/4/70

静思

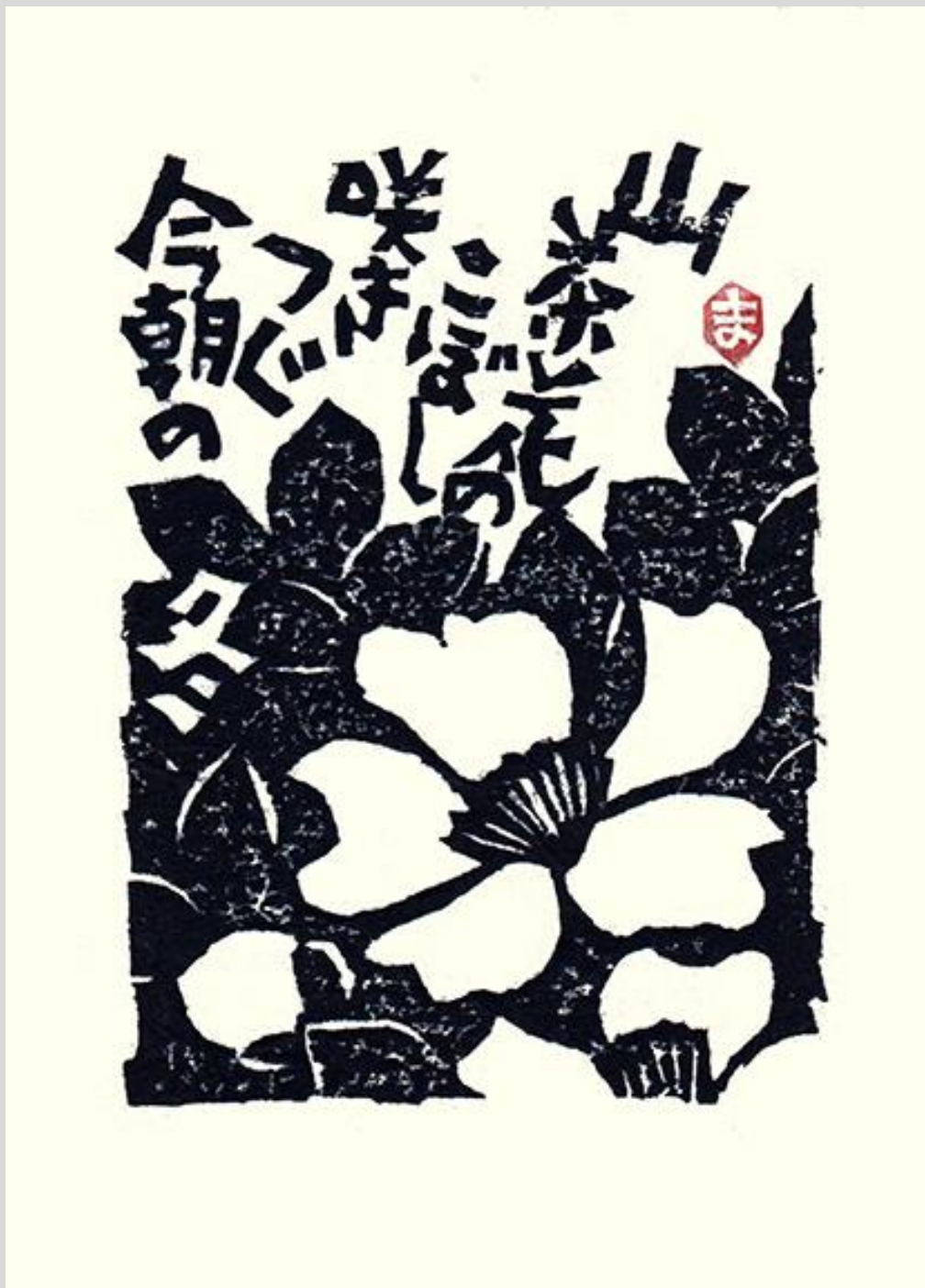
Genshichi Tsukagoshi

21 **Black-and-white flower** - florist's chrysanthemum (*Chrysanthemum grandiflorum*) by Katsue Inoue, woodblock, 350 x 400 mm



品 丁一川花 菊 一井心 附小

22 **Black-and-white flower** -
camellia (*Camellia japonica*) by
Masao Tsuchiya, woodblock, 105 x
140 mm



23 **Black-and-white flower** - sacred lotus (*Nelumbo nucifera*) by Kōzō Iwasaki, woodblock, 140 x 200 mm

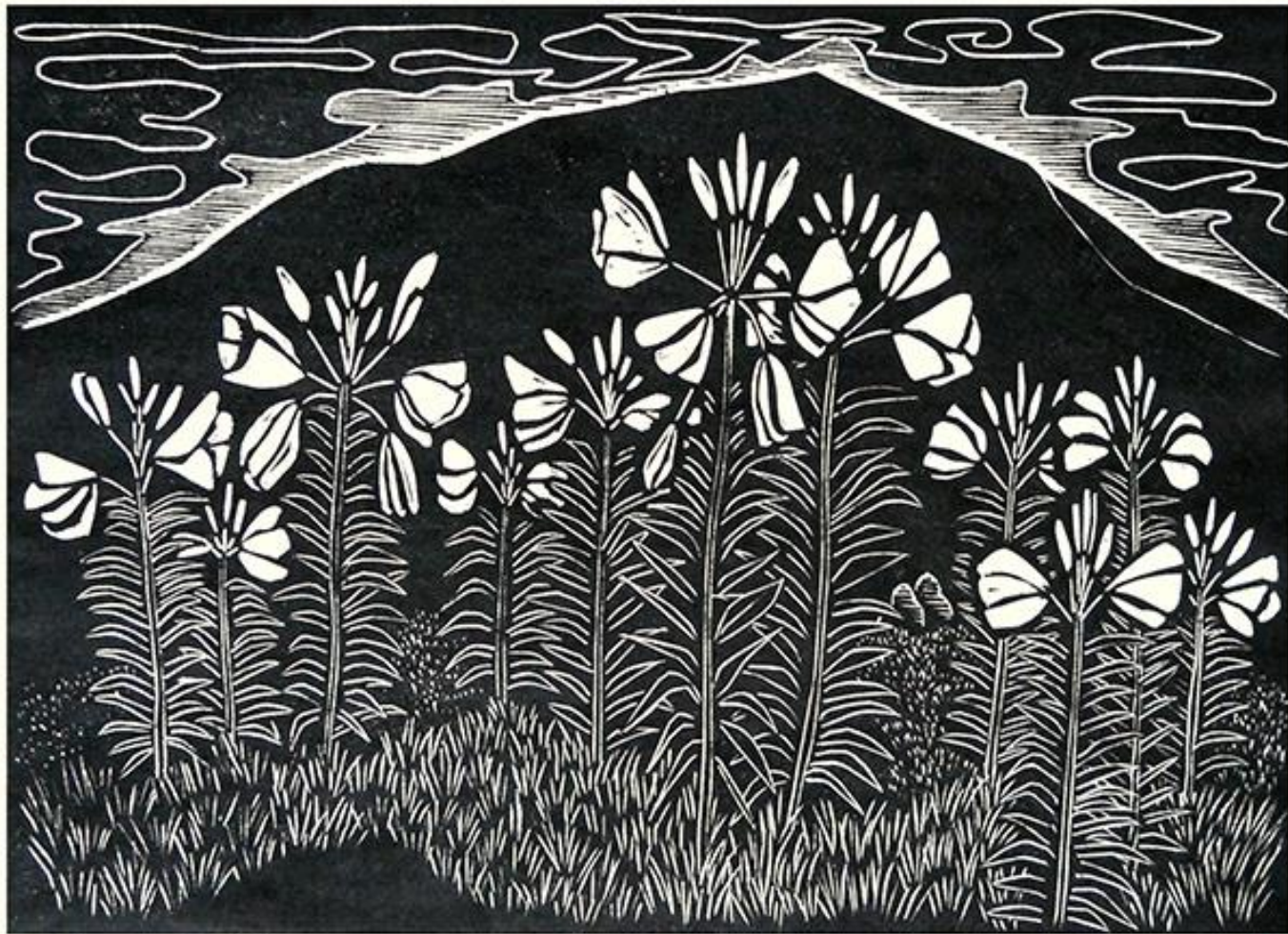


2000 蓮 4/50 岩崎浩三 浩

24 **Black-and-white flower** - cockscomb (*Celosia cristata*) by Yasuji Horikoshi, woodblock, 340 x 335 mm



25 **Black-and-white flower** - evening primrose (*Oenothera* sp.) by Kayoko Kidoguchi, woodblock, 410 x 330 mm



2/30 1995

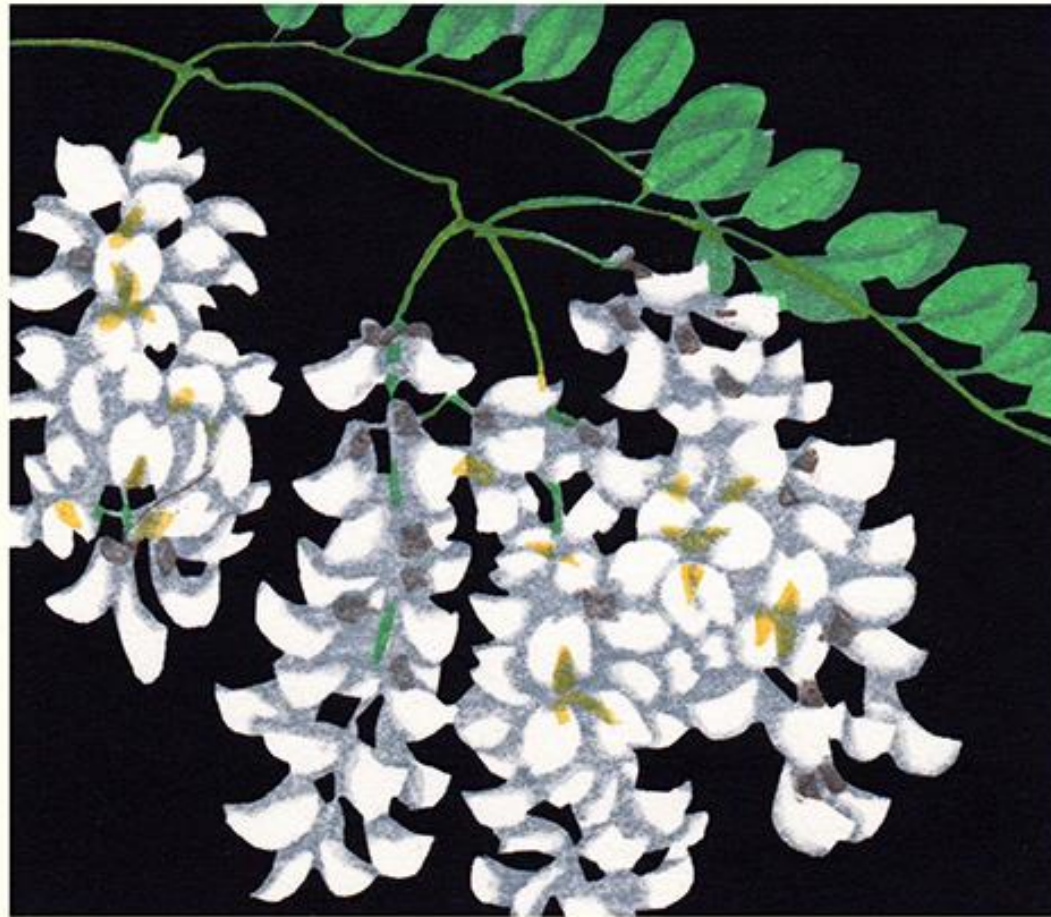
Kayoko

26 **Black background** - spider-
flower (*Tarenaya hassleriana*) by
Fumio Fujita, woodblock, 225 x 300
mm



醉蝶花 1972 132/200

27 **Black background** - black locust (*Robinia pseudoacacia*) by Fumio Kitaoka, woodblock, 170 x 150 mm



Artist proof にせあかしや Fumio Kitaoka 1977

28 **Black background** - leopard plant (*Farfugium japonicum*) by Kōichi Maeda, woodblock, 190 x 170 mm



29 **Black background** - lavender (*Lavandula angustifolia*) by Shigeru Oda, intaglio, 380 x 310 mm



10/150

lav. lavender

-43

S. Oda

30 **Black background** - golden-rayed lily (*Lilium auratum*) by Tomikichirō Tokuriki , woodblock, 420 x 270 mm



[Back to Exhibitions](#)